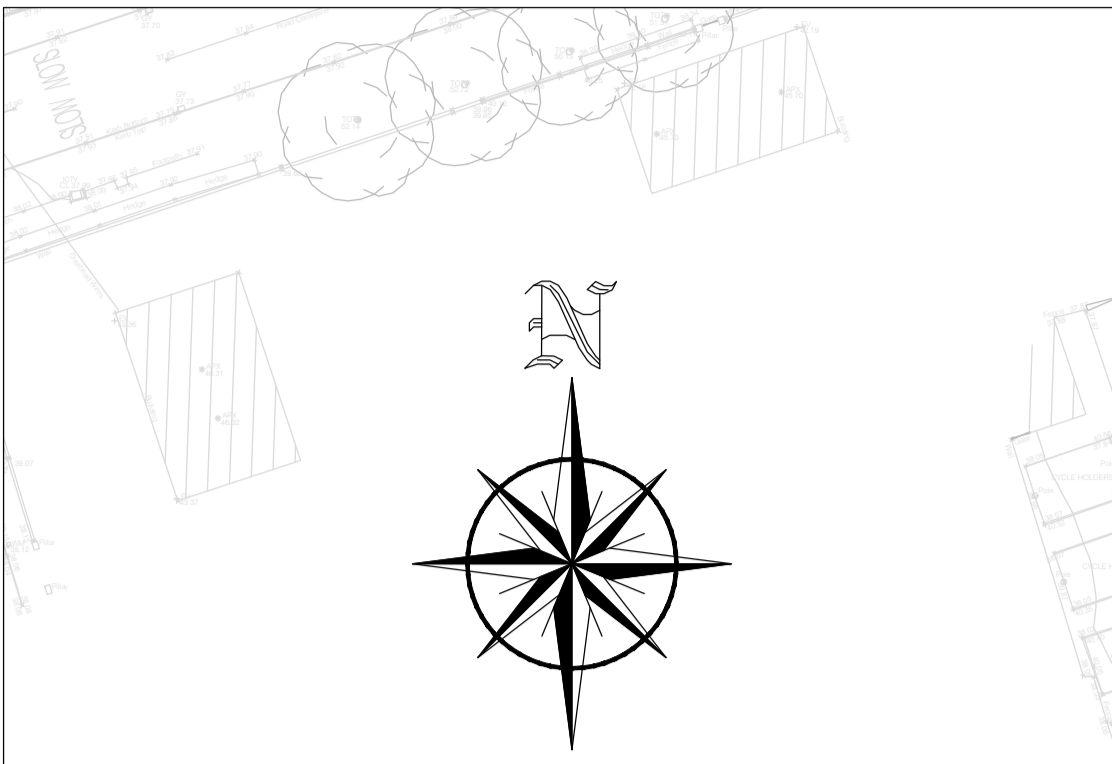
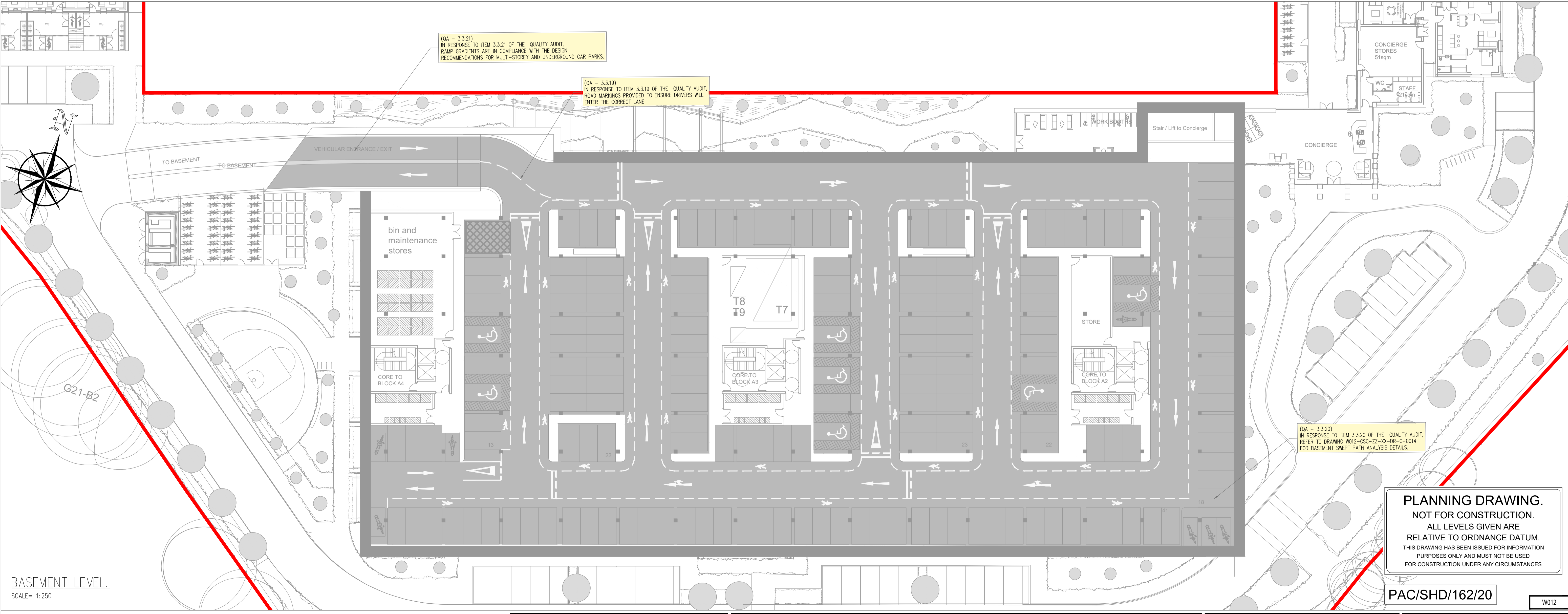


LEGEND:

- PROPOSED ROAD
- PROPOSED FOOTPATH
- PROPOSED PARKING SPACES
- PROPOSED LOADING BAY
- PROPOSED RAISED TABLE
- PROPOSED TACTILE PAVING BUFF COLOURED (UNCONTROLLED PEDESTRIAN CROSSING)
- SITE BOUNDARY
- RIPARIAN CORRIDOR



GROUND LEVEL
SCALE= 1:500



BASEMENT LEVEL
SCALE= 1:250

PLANNING DRAWING.
NOT FOR CONSTRUCTION.
ALL LEVELS GIVEN ARE
RELATIVE TO ORDNANCE DATUM.
THIS DRAWING HAS BEEN ISSUED FOR INFORMATION
PURPOSES ONLY AND MUST NOT BE USED
FOR CONSTRUCTION UNDER ANY CIRCUMSTANCES

PAC/SHD/162/20

Rev. No.	Date	REVISION NOTE	Des. By	Chk. By

NOTES 1. For setting out refer to Architect's drawings. 2. This drawing to be read in conjunction with all other Architectural and Engineering drawings and all other relevant drawings and Specifications. 3. DO NOT SCALE THIS DRAWING. Use figured dimensions only. 4. No part of this document may be reproduced or transmitted in any form or stored in any retrieval system of any nature without the written permission as copyright holder except as agreed. 5. Ordnance Survey Ireland Licence Number EN 0074021		Architect Scott Tallon Walker DUBLIN LONDON LIMERICK	CS Consulting Group Head Office 7-22 Dame Street, Dublin 2 T: +353 (0)1 5480963 F: +353 (0)1 9013355 E: info@csconsulting.ie W: www.csconsulting.ie
Project Proposed Development at Clonkeen Road	Title Quality Audit	Dwg. No. W012-CSC-ZZ-XX-DR-C-0033	Quality IS EN ISO 9001:2008 ISO 9001:2015 IS EN ISO 14001:2004 IS EN ISO 14001:2015 IS EN ISO 45001:2018 Health & Safety OHSAS 18001:2007
Date 19.07.2021	Des. By JS	Chk. By GF	Appr. By NB
Scale AS SHOWN (A3)	Revision 1	Author JS	Checker GF